

### Components

- 1x Plug  
Inox 316 L/ Aluminium  
6063  
2x O-Ring



- 1x Installation memo  
SPRING4  
Solarothermal application



- 1x Plug with manual drain  
Plug :Inox 316 L/  
Aluminium 6063  
Drain : Inox - PTFE  
2x O-Ring



- Silicon grease  
-40°C to 200°C  
EPDM compatible  
Glycol compatible  
odorless



- 2x Inlet outlet angular  
connector  
Aluminum 6063 + POM-C  
(Dielectric union)  
Thread : G1"1/4" (ISO  
228/1)  
4x O-Ring



- 1x carton box  
21,5 x 15,5 x 8 cm



- 9x O-Ring  
(Including 8 assembled  
on the connector)  
EPDM Peroxyde  
70SHA Black



- 5x Connector blocker  
Inox 316 L

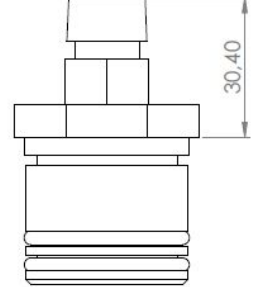
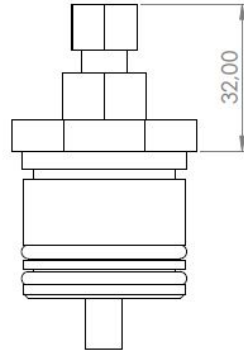
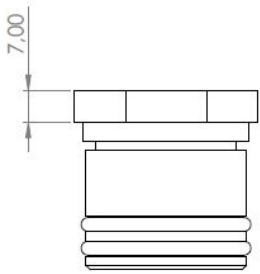
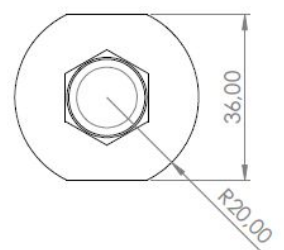
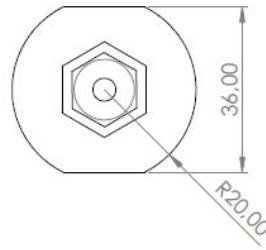
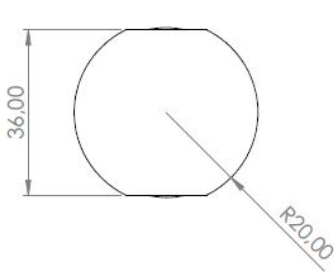


- 3x Flat fiber joint  
high temperature  
JFHT6 1"1/4



### Packaging





Simple

Doigt de gant  
Kit 3/4"

Purgeur  
Kit 1"1/4"

